

PROJECT WORK ORDER



PROJECTS



Project -driven companies continue to discover the power and flexibility of the Microsoft Dynamics SL *Project Series*. When the planning and handling of materials is required, knowing that you have sufficient stock and when that stock will be available is a requirement for the efficient scheduling and management of your project.

Benefits

SandlerKahne's *Project Work Order (PWO)* provides project-driven companies with vastly improved planning for and control over inventory and resource usage on Project Controller projects and tasks. Material usage visibility, with time sensitivity, gives you tremendous control over your management of inventory. Where streamlined work-in-process tracking is important, Project Work Order adds significant power to the already powerful Microsoft Dynamics SL Project Series.

For Any Project-Driven Company

Whether your business is landscaping or bridge building, *PWO* will help you keep your costs down and maximize your profits. Are you a systems integrator? If so, Project Work Order will help you make sure that you have sufficient inventory quantities when the time comes to send a crew out to your customer's site.

You should consider *PWO* if:

- You run your business in a project-driven fashion, and
- You want to track work-in-process, and/or
- You consume inventory on your projects, and
- You would like visibility of future material requirements for those projects to help you make better purchasing decisions, and
- You are considering (or have already selected) the Microsoft Dynamics SL Project Series

For Project-Driven Manufacturers

Are you building large-ticket, multi-level items that take you time to manufacture? Could you benefit from applying project-management concepts to the building of your final product? Do you need to manufacture subassemblies to fulfill requirements for your final product? If your answer to these questions is "yes", then the following modules can help you attain your goals:

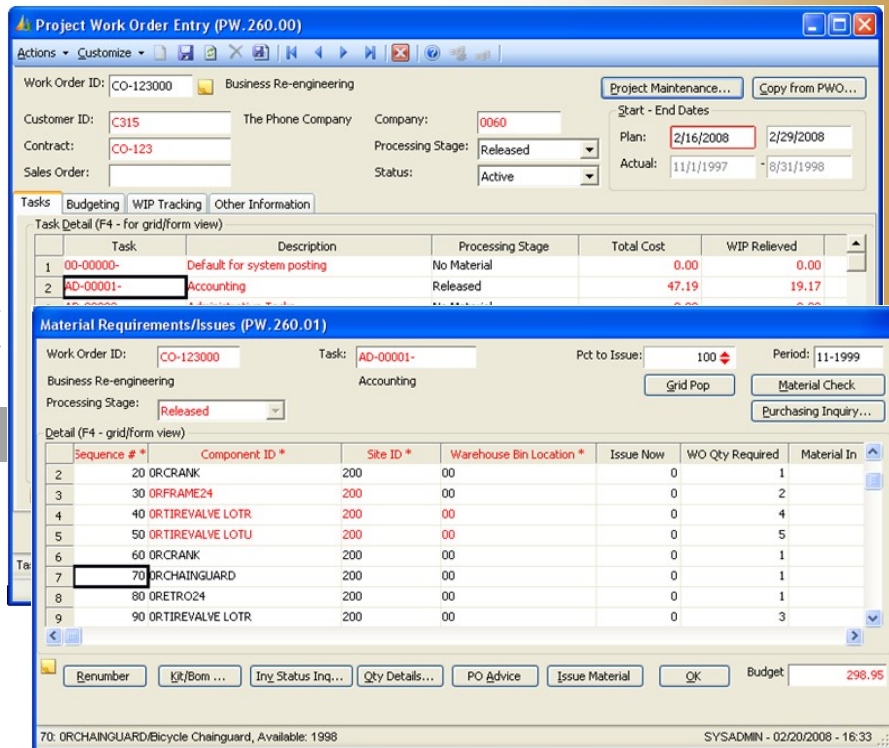
- o Microsoft Dynamics SL: *Bill of Materials, Work Order, Project Series*
- o Sandler-Kahne Software: *Project Work Order, Work Order Procurement, Project Resource Estimating & Planning (PREP), Shop Floor Control*

Designed For Microsoft Dynamics SL Project Series

- Material Planning and Control
- WIP Tracking
- Budgeting and Budget Revisions

Also works with:

- Work Order
- Work Order Procurement
- Project Resource Estimating & Planning (PREP)



Enabling a Microsoft Dynamics SL Project as a Project Work Order allows you to allocate inventory to individual tasks.

Inventory Integration

PWO's Planned Inventory Position reporting and Microsoft Dynamics SL Inventory's Available-to-Promise inquiries provide for the visibility of your inventory position on a date-specific basis. Information on the plans and actions specific to *Project Work Order* is fed to the Inventory system. This information, along with related plans and actions throughout the Microsoft Dynamics SL Distribution series, provides for comprehensive visibility at your fingertips. Using the Inventory module's Inventory Status Inquiry, a few clicks of the mouse puts you in touch with all plan and action details for project work orders, manufacturing work orders, sales orders, and purchase orders.

Available-to-promise, inventory position by site, cost layers, and transaction detail is available from this powerful inquiry.

Non Inventory Material

If you're using Sandler-Kahne's *Work Order Procurement* module, items that are not defined in Inventory may be purchased directly for the Project Work Order, but still controlled as though they were.

Budgeting/Budget Revisions

Changes to the Material List can optionally update the Project Budgets. If the Project Budgeting module is being used, then these changes can also update Budget Revisions. Support for Contract Management change orders is also part of this feature.

Work In Process Tracking

You may optionally collect all costs in work-in-process on a PWO by PWO basis. The control to relieve WIP at the Task or PWO level provides for automatic synchronization with the general ledger, and on-demand reporting of that synchronization.

BUSINESS ISSUES	HOW THIS FLEXIBLE PRODUCT CAN HELP
I need to plan for and reserve inventory to one or more tasks on one or more projects.	Allocate inventory on a time-sensitive basis You can predefine the inventory items that are required for a given task, and specify the date the material is required. This information feeds the Planned Inventory Position and Available to Promise status, helping to drive the purchasing process.
I must be able to capture any cost associated with production.	Uses Project Controller cost capture methods A Project Work Order is actually a standard Project Controller project that has been enhanced to allow for planning and control of inventory consumption. Therefore, with the exception of issuing inventory, costs are collected exactly as with a standard Project Controller project/task.
I need to return material or borrow from one order to satisfy another.	Material transfers and returns Project Work Order allows you to transfer material from a task on a project work order back to stock (any location), to another task on the same or different project work order, to a project/task, a manufacturing work order, or to scrap.

Project Work Order delivers these additional features:

- Integration with SL Projects and Distribution
- Time-phased allocation of inventory
- Staging control of Tasks
- Lot/Serial support
- Work Order Inquiry

Sample Reports include:

- Shop Packet
- Planned Inventory Position
- Work Order Profitability
- Work Order Status
- Component Shortages

Available on these Microsoft Dynamics SL Versions:

Microsoft Dynamics SL
2018, 2015, 2011, 7.x, 6.x



SK GLOBAL SOFTWARE
formerly Sandler • Kahne Software

940 Gemini St. Suite 200
Houston, TX 77058

Voice: (301)963-7300 x117
Fax: (301)560-4984
Email: sales@sksoft.com
Web: www.sksoft.com

© Sandler-Kahne Software, Inc.
2000-2020 all rights reserved
All features/functions mentioned within this document are subject to change. This document is for information purposes only. Sandler Kahne Software makes no warranties, express or implied, in this document.
Revised 08/10/2020